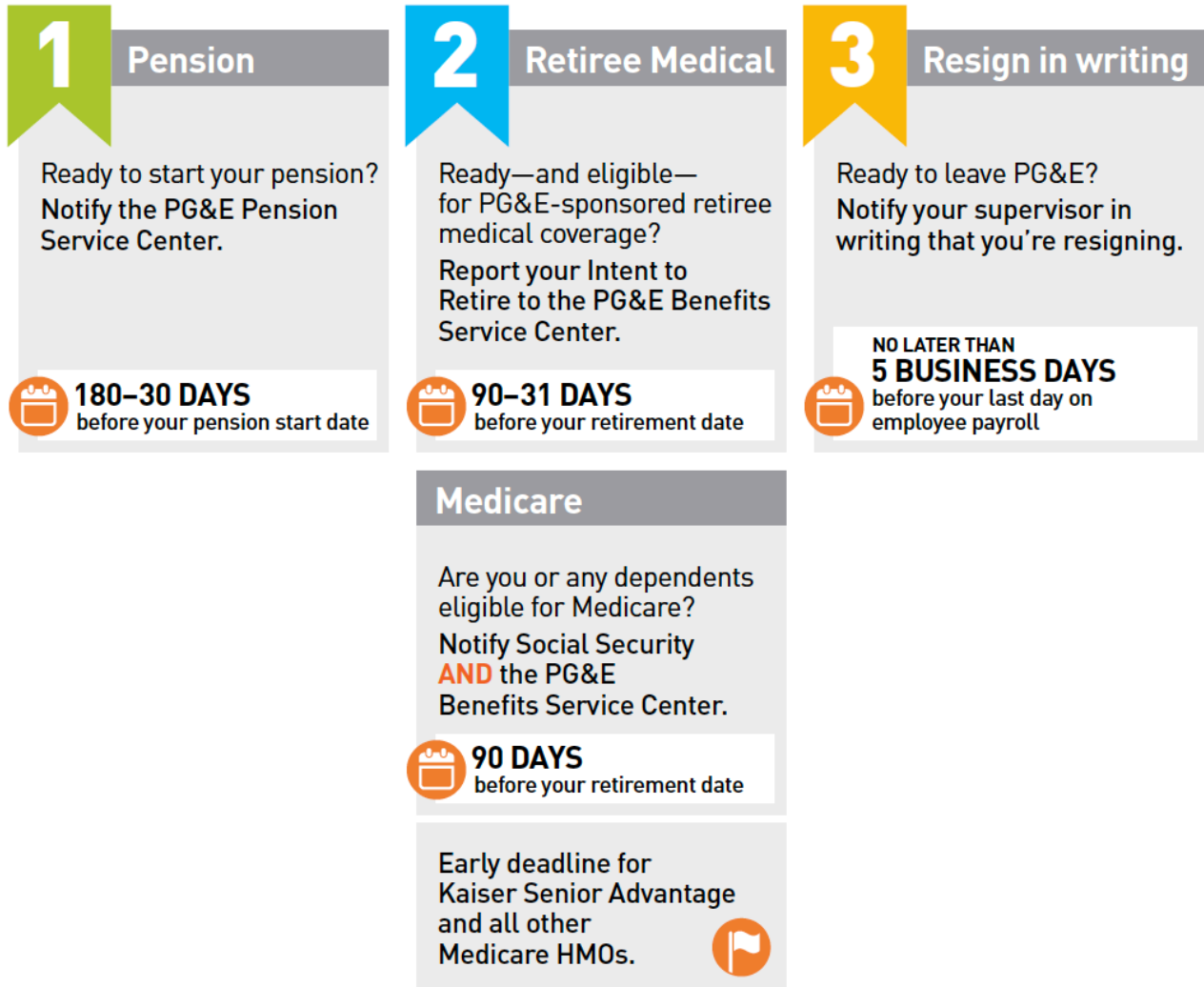


# Retirement is as easy as: 1. 2. 3.

## Ready to retire? First, pick a date.

### Next, you'll need to:

1. Complete your pension paperwork.
2. Report your Intent to Retire to the PG&E Benefits Service Center.
3. Notify your supervisor in writing that you're resigning.



### Pension

Log in to your **PG&E PensionConnect** account:

**At work**, go to *PG&E@Work for Me* and click **About Me > My Retirement > PG&E PensionConnect**. You'll be automatically logged in to your account.

**From any computer or mobile device**, log in to your account at [myPensionConnect.com](http://myPensionConnect.com).

**OR**

Call **1-800-700-0057**.

### Retiree medical

Log in to your **myPlans Connect** account (formerly Mercer BenefitsCentral):

**At work**, go to *PG&E@Work for Me* and click **About Me > My Benefits > myPlans Connect**. You'll be automatically logged in to your account.

**From any computer or mobile device**, go to [myggebenefits.com](http://myggebenefits.com) and click **Log In** under **Manage Your Benefits**.

**OR**

Call **1-866-271-8144**.